



## Atmospheric Dispersion Model System

**AIRMAP** is an atmospheric dispersion model designed to predict the trajectory and fate of a wide variety of chemical substances and biological agents in the atmosphere.

### Applications for AIRMAP

- Hindcast/forecast of release into atmosphere
- Evaluate human health risk
- Contingency and response planning (e.g., for security related to accidental or intentional releases)
- Evaluation of discharges from fixed or moving point sources
- Drills and education

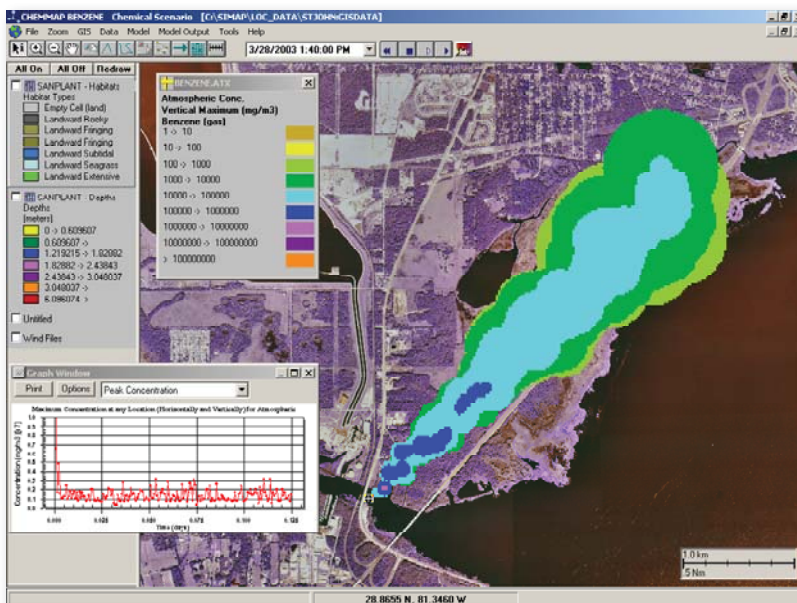


### AIRMAP Highlights

- Integrated GIS
- Moving or fixed source
- Hazard Quotient and Time Weighted Average (TWA) Calculations
- Environmental, Chemical, and MSDS Databases

### Features

- Contains ASA's own GIS or can be used in other GIS software such as ArcView®
- Easily interpreted visual display of temporally and spatially varying concentrations, not just contour plots
- 3D Viewer capabilities
- Plot concentration with time for any point in the domain, or maximum concentration as a function of time
- MSDS database linked to the physical-chemical database
- Extensive chemical database providing physical-chemical data

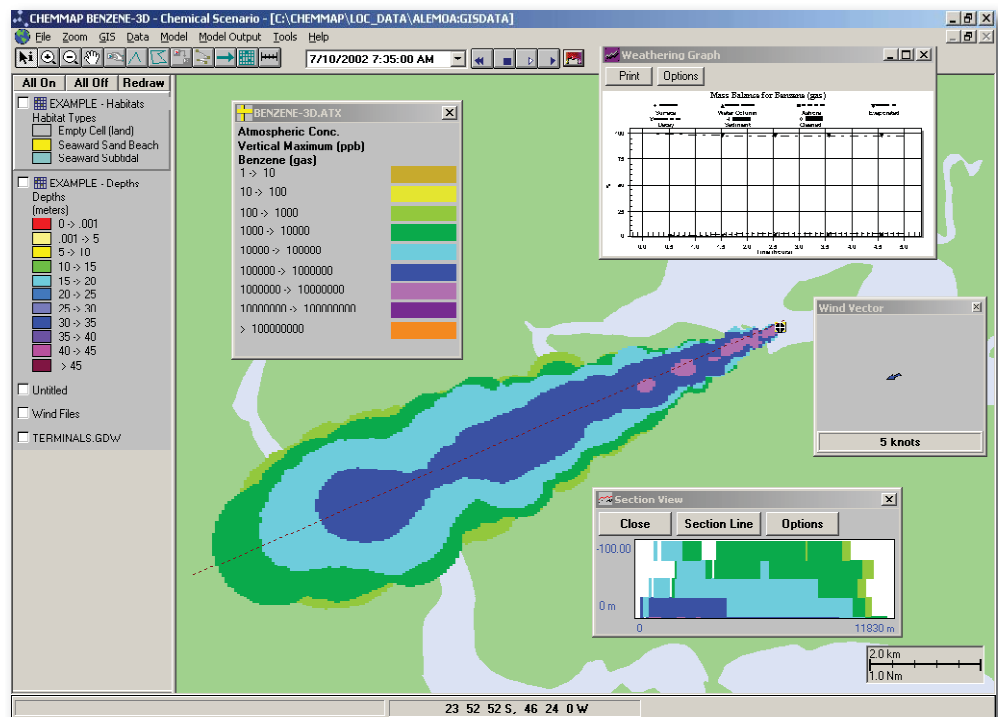


## AIRMAP Simulates:

- Moving or stationary sources
- Time-varying source fluxes
- Release over land or water
- Transport and dispersion materials in the atmosphere
- Evaporation and volatilization
- Natural degradation

## AIRMAP Output Includes:

- Concentrations as a function of time, position and height
- Time weighted average concentrations (Immediate Danger to Life or Health (IDLH) and Time Weighted Average TWA), for example) for comparison to human health criteria
- Hazard Quotients, such as (PEC/PNEC)



## Environmental, Chemical and MSDS Databases

- **Environmental database** - includes topography, coastline, and ecological habitat information
- **Chemical database** - includes important data on the physical and chemical properties of common chemical compounds. Users can add new compounds from scratch or create modified versions of compounds already within the database
- **MSDS database** - ChemWatch, Chemical Management System's comprehensive Health and Safety information database, is linked directly to the Chemical Database

ASA has built a wide range of computer modeling applications to solve various environmental problems. ASAMAP™, ASA's suite of environmental modeling tools, are available for licensed use and customization and include: AIRMAP, CHEMMAP, CMSMAP, COASTMAP, HYDROMAP, OILMAP, SARMAP, SIMAP, MUDMAP and WQMAP. For more information visit our website at [www.asascience.com](http://www.asascience.com).



70 Dean Knauus Drive • Narragansett, RI USA 02882 • +1 401 789-6224  
Seattle | São Paulo | Gold Coast | Perth | Dubai  
[www.asascience.com](http://www.asascience.com)